



# dLAN® 200 AVpro WP (Wall Plug)

Better performance in the power supply network with built-in filter technology

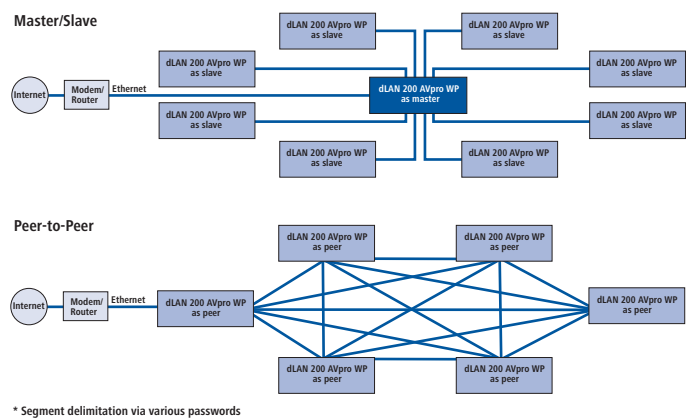
- Integrated mains filter
- Data transmission via the electrical wiring
- Up to 200 Mbps

The new devolo dLAN® business solutions are a cost-effective way to use a building's electrical wiring to set up a broadband IP network. There is an obvious advantage to this approach – no need to install a new cable means keeping cost and effort to a minimum. The new dLAN® 200 AVpro WP is based on the HomePlug AV standard and transmits data, voice and video over the electrical wiring at up to 200 Mbps. In addition, the dLAN® 200 AVpro WP has an integrated socket for connecting terminals and a filter for optimising the transmission capacity.

## Produkt highlights

- HomePlug AV adapter with transfer rates of up to 200 Mbps – ideally suited to broadband multimedia applications such as IPTV, Video on Demand and bandwidth-intensive Internet applications
- Integrated socket for connecting power strips and terminal devices
- Integrated mains filter for reducing interference on the powerline network
- Remote Management via the dLAN® 200 AVpro manager management software
- Quality Indicator LED for determining broadband status
- Integrated Quality of Service function (QoS) with automatic data prioritisation
- 1 Ethernet port Auto MDI/X
- Master/slave or peer-to-peer architecture
- Scalable upgrades by deploying up to 63 slaves per master
- Range: 200 m over electrical wiring
- Secure data encryption
- Comprehensive configuration options (notching, output power etc.)

## Segment\*-size 1 master and up to 63 slaves



## Product advantages of dLAN® technology

- Scalable and cost-efficient solution for custom-tailored broadband communication
- Simple installation
- No new cables, no drilling, no mess
- Quality of Service function for automatic data prioritisation (in conjunction with the dLAN® 200 AVpro manager management software)
- Frequency notching for suppressing certain frequencies (in conjunction with the dLAN® 200 AVpro manager management software)
- dLAN® 200 AVpro manager provides centralized management of the dLAN® network

## Cost advantages of dLAN® technology

- Cost-efficient multiple usage of existing electrical wiring for Internet telephony, IPTV, broadband data communication
- No changes to existing infrastructure
- The attractive price-performance ratio allows fast Return on Investment (ROI)



# dLAN® 200 AVpro WP performance features



<b>General</b> <ul style="list-style-type: none"> <li>• Adapter for integration into the electrical power network</li> <li>• Flexible and scalable solution through formation of segments with 1 master and up to 63 slaves per segment</li> <li>• Integrated attenuating filter (-22db to -45db)</li> <li>• Transmission frequency range: 2 MHz - 30 MHz</li> </ul>	<b>Weight</b> 180 g	<b>System requirements</b> <b>Device interfaces</b> Ethernet interface
<b>Standards</b> <ul style="list-style-type: none"> <li>• Ethernet specifications IEEE 802.3, IEEE 802.3x, IEEE 802.3u, Auto MDI / X</li> <li>• HomePlug AV</li> </ul>	<b>Indicators and connections</b> <b>LEDs</b> <ul style="list-style-type: none"> <li>• Power</li> <li>• Ethernet (Link/Act)</li> <li>• dLAN (Link/Act/quality)</li> </ul>	<b>Operating systems</b> Windows® Vista32bit/Vista64bit/XP32bit, Mac OS® X Linux® and all operating systems with TCP/IP support
<b>Media access method</b> CSMA/CA	<b>Device port</b> RJ45, 10/100 Mbps, Auto MDI/X	<b>Certifications</b> <b>Approvals</b> CE-compliant in accordance with the technical requirements of all EU countries and Switzerland: <ul style="list-style-type: none"> <li>• EN 55022 Class B</li> <li>• EN 50412</li> <li>• EN 60950</li> </ul>
<b>Transmission speed</b> Up to 200 Mbps (gross)	<b>Internal power supply</b> <b>Power consumption</b> 5 W (max.)	<b>Scope of delivery</b> <ul style="list-style-type: none"> <li>• dLAN® 200 AVpro WP</li> <li>• Ethernet cable RJ45-RJ45 (Cat 5)</li> <li>• Power cord</li> <li>• CD-ROM: PDF manual, managementsoftware dLAN® 200 AVpro manager for Windows® Vista32bit/Vista64bit/XP32bit, Linux®, Additional software: devolo Informer, dLAN® 200 AVpro2 Configurator</li> </ul>
<b>Transmission method</b> asynchronous	<b>Power supply</b> AC 110-230V 50/60Hz	<b>Order n°</b> dLAN® 200 AVpro WP DE, NL, ES, AT, PT, NO, SW, FI: 1352 FR, BE, PL, CZ, SL: 1353 CH: 1428
<b>Modulation</b> OFDM - 1155 carriers, 1024/256/64-QAM, QPSK, BPSK	<b>Power output to integrated socket</b> 230V / 16 A max. DE, NL, ES, PT, AT, SW, FI, NO: Type F (CEE 7/4 / Type E + F (CEE 7/7 + CEE 7/4); FR, BE: Type E (CEE 7/7) / Type E + F (CEE 7/7 + CEE 7/4); CH: Type J (SEV 1011) / Type J (SEV 1011)	
<b>Range</b> <ul style="list-style-type: none"> <li>• Power line: 200 m</li> </ul>	<b>Ambient conditions</b> <b>Temperature</b> Storage: -25°C – +70°C (-13°F – +158°F) Operation: 0°C – +40°C (+32°F – +104°F)	
<b>Security</b> 128 bit AES encryption	<b>Humidity</b> 10–90% humidity (non-condensing)	
<b>QoS</b> Analysis and classification of data traffic via: <ul style="list-style-type: none"> <li>• VLAN Tag Priority IEEE 802.1p</li> <li>• Type of Service (ToS)</li> <li>• IGMP Snooping</li> <li>• Traffic type (unicast/multicast/broadcast)</li> <li>• Differentiated Services (DSCP)</li> </ul>		
<b>Dimensions</b> 130 x 66 x 40 mm (height x width x depth)		

## dLAN® 200 AVpro WP in comparison with other devolo products

	dLAN® 200 AVpro WP	dLAN® 200 AVpro2 / dLAN® 200 AVpro2 i	dLAN® 200 AVpro host / dLAN® 200 AVpro host wireless N
Transmission medium	Power line	Coaxial line/power line/telephone line	Power line/coaxial line/telephone line
Max. segment size Without repeater structure	1 master + 63 slaves	1 master + 63 slaves	1 master + 63 slaves (power line) (253 Slaves via Coax and telephone line)
Remote management	Yes, using management software dLAN® 200 AVpro manager	Yes, using management software dLAN® 200 AVpro manager	Yes, via SNMP and Webinterface
Ethernet Port	1 (Auto MDI/X)	1 (Auto MDI/X)	4-Port managed Switch (Auto MDI/X)
IP address	No	No	Yes